

# **MANDATORY DISCLOSURE**

## **GOVT. POLYTECHNIC, DHENKANAL**

### **1. NAME OF THE INSTITUTION**

**GOVERNMENT POLYTECHNIC, DHENKANAL**

At-MAHISHAPAT Po-DHENKANAL, Dist.- DHENKANAL Pin 759001

Ph-6762-226541 [E-Mail-wpdhenkanal@rediffmail.com](mailto:wpdhenkanal@rediffmail.com)

Institution website: -<https://www.gpdhenkanal.org/>

### **2. NAME AND ADDRESS OF THE TRUST/ SOCIETY/ COMPANY AND THE TRUSTEES: -**

It is a Govt. Institution controlled by Director of Technical Education & Training, Odisha under SkillDevelopment & Technical Education Department, Govt. of Odisha

### **3. Name and Address of the Vice Chancellor/ Principal/ Director**

Principal : Ashok Kumar Rout

Govt. Polytechnic, Dhenkanal

Mob: 8249793163

### **4. Name of the affiliating University**

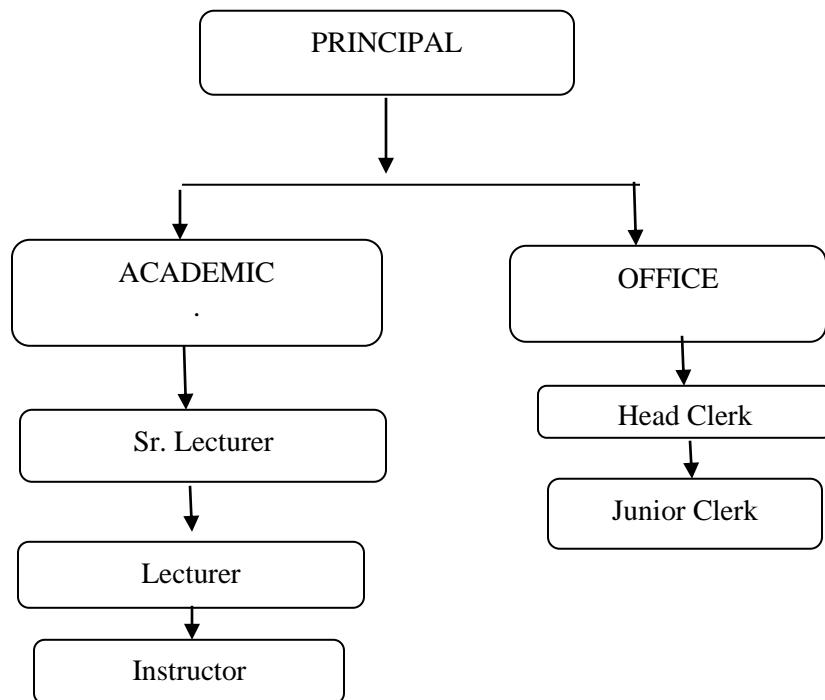
State Council for Technical Education & Vocational Training, Odisha, Bhubaneswar-  
751012

### **5. GOVERNANCE**

- Members of the Governing Body and their brief background
  - i) Collector & District Magistrate, Dhenkanal –Chairman
  - ii. Executive. Engineer ,R&B , Dhenkanal -Member
  - iii. Executive Engineer, PH, Dhenkanal-Member
  - iv. District Employment Officer, Dhenkanal –Member
  - v. Nominee of the DTE&T–Member
  - vi. Executive Engineer Electrical TPCL Dhenkanal-Member
  - vii. Two faculty Members to be nominated by the Principal–Member
  - viii. Principal – Member Secretary

- Members of Academic Advisory Body
  - i) Principal –Chairman
  - ii) All Dept. Heads –Member
  - iii) Academic Coordinator – Member Convenor
- Frequently of the Board Meeting and Academic Advisory Body –

Governing body meets twice a year & Academic Advisory Body meets every fortnight
- **Organizational chart and processes–**



- Nature and Extent of involvement of Faculty and students in academic affairs/improvements :- Staffs & Students are involved in conducting seminars, different quiz competitions and cultural programmes. Feedback from students are collected regularly for better improvement of academic atmosphere.
- Mechanism/ Norms and Procedure for democratic/ good Governance  
Good Governance has been implemented in this institution by initiating online admission process and all transactions digitally.
- Student Feedback on Institutional Governance/Faculty performance-YES
- Establishment of Anti Ragging Committee -YES
- Establishment of Grievance Redressal Committee in the Institution and Appointment of OMBUDSMAN by the University -YES
- Establishment of Internal Complaint Committee (ICC) –YES
- Establishment of Committee for SC/ ST -YES
- Internal Quality Assurance Cell -YES

#### 6. PROGRAMMES

- Name of Programmes approved by AICTE–Diploma in Engg. only  
CIVIL, ELECTRICAL. MECHANICAL, CSE & ETC
- Name of Programmes Accredited by AICTE -NIL
- Status of Accreditation of the Courses
  - Total number of Courses-05
  - No. of Courses for which applied for Accreditation-01
  - Status of Accreditation – Preliminary work is going on to Apply
- For each Programme the following details are to be given:
  - Name – Diploma in **Civil Engineering**
  - Number of seats -60
  - Duration – 3yrs.
  - Cut off marks/rank of admission during the last three years-35% in HSC or equivalent Exam.
    - Fee– Rs.5800/-for General, Rs.3300/-for SC/ST&TFW Candidates, Rs.800/-for(Income below 2.5 lakhs only for SC &ST)
  - Placement Facilities- Through Central Placement cell at Institution & DTE &T level
  - Campus placement in last three years with minimum salary, maximum salary and average salary–30 students with 1.8 Lakhs per Annum
- For each Programme the following details are to be given:
  - Name – Diploma in **Electrical Engineering**

- Number of seats -60
- Duration – 3yrs.
- Cut off marks/rank of admission during the last three years-35%inHSC or equivalent Exam.
  - Fee– Rs.5800/-for General,Rs.3300/-for SC/ST&TFW Candidates,Rs.800/-for(Income below 2.5 lakhs only for SC &ST)
- Placement Facilities- Through Central Placement cell at DTE &T level
- Campus placement in last three years with minimum salary, maximum salary and average salary– 50 students with 1.8 Lakhs per Annum)
  
- For each Programme the following details are to be given:
  - Name – Diploma in **Mechanical Engineering**
  - Number of seats -60
  - Duration – 3yrs.
  - Cut off marks/rank of admission during the last three years-35%inHSC or equivalent Exam.
    - Fee– Rs.5800/-for General,Rs.3300/-for SC/ST&TFW Candidates,Rs.800/-for(Income below 2.5 lakhs only for SC &ST)
  - Placement Facilities- Through Central Placement cell at DTE &T level
  - Campus placement in last three years with minimum salary, maximum salary and average salary–80 students with1.8 Lakhs per Annum
  
- For each Programme the following details are to be given:
  - Name – Diploma in **Computer Sc. & Engineering**
  - Number of seats -40
  - Duration – 3yrs.
  - Cut off marks/rank of admission during the last three years-35%inHSC or equivalent Exam.
    - Fee– Rs.5800/-for General,Rs.3300/-for SC/ST&TFW Candidates,Rs.800/-for(Income below 2.5 lakhs only for SC &ST)
  - Placement Facilities- Through Central Placement cell at DTE &T level
  - Campus placement in last three years with minimum salary, maximum salary and average salary–35 students with1.8 Lakhs per Annum
  
- For each Programme the following details are to be given:
  - Name – Diploma in **Electronics & Telecommunication Engineering**
  - Number of seats -20

- Duration – 3yrs.
- Cut off marks/rank of admission during the last three years-35%inHSC or equivalent Exam.
  - Fee– Rs.5800/-for General,Rs.3300/-for SC/ST&TFW Candidates,Rs.800/-for(Income below2.5 lakhs only for SC &ST)
- Placement Facilities- Through Central Placement cell at DTE &T level
- Campus placement in last three years with minimum salary, maximum salary and average salary–10 students with1.8 Lakhs per Annum

7. **FACULTY**

- Branch wise list of Faculty members:09 (Incl. Principal)
  - Permanent Faculty
    - Mechanical-0
    - Electrical-0
    - Electronics-3
      - Civil-0
    - Math & Sc-03
    - Comp. Sc.-02
  - Adjunct Faculty–No Adjunct Faculties have been appointed; but Part-Time Faculties have been appointed with prior Approval from Government.
    - Civil-03
    - Electrical-03
    - Mechanical-03
    - CSE-04
    - Math &Sc.-03
  - Permanent Faculty: Student Ratio –1:30

8. **Profile of Vice Chancellor/ Director/ Principal/Faculty**

For each Faculty give a page covering with Passport size photograph

- Name –ASHOK KUMAR ROUT
- Date of Birth –15-06-1965
- Unique id –1-10993904355
- Education Qualifications – M.E in Civil
- Work Experience
  - Teaching – 30Years
  - Research -NIL
  - Industry -NIL
  - others -NIL
- Area of Specialization- Soil Mech. & Foundation Engg.
- Courses taught at Diploma/ Post Diploma/ Under Graduate/ Post Graduate/ Post Graduate Diploma Level-Diploma level
- Research guidance
  - No. of papers published in National/ International Journals/Conferences-NIL
  - Master -Yes
  - Ph.D. -NIL
- Projects Carried out -NIL
- Patents -NIL
- Technology Transfer -NIL
- Research Publications -NIL
- No. of Books published with details -NIL

9. **FEE**

- Details of fee, as approved by State Fee Committee, for the Institution-Rs.5800/-

for General, Rs. 3300/- for SC/ST, Rs. 800/- for (Income below 2.5 lakhs only for SC&ST)

- Time schedule for payment of fee for the entire programme-Yearly
- No. of Fee waivers granted with amount and name of students– 20 nos amounting 50000/- (For Academic Session 2021-2022)
- Number of scholarship offered by the Institution, duration and amount- Nil
- Criteria for fee waivers/scholarship– Lower Income of Parents with Good Academic Background/Min. 60% marks in last attended examination
- Estimated cost of Boarding and Lodging in Hostels–Rs.3000/-per Year

**10. ADMISSION**

- Number of seats sanctioned with the year of approval–  
60 seats each in Civil, Electrical, Mechanical, 40 in CSE and 20 in ETC
- Number of Students admitted under various categories each year in the last three years–  
2019-20–214 (Civil–41, CSE-42, Electrical–61, ETC-10, Mechanical-60)  
2020-21–231 (Civil–50, CSE-43, Electrical–64, ETC-11, Mechanical-63)  
2021-22–259 (Civil–62, CSE-46, Electrical–67, ETC-21, Mechanical-63)
- Number of applications received during last 02 years for admission under Management Quota and number admitted – NOT APPLICABLE

**11. ADMISSION PROCEDURE**

- Mention the admission test being followed, name and address of the Test Agency and its URL (website) – <https://samsodisha.gov.in/>
- Number of seats allotted to different Test Qualified candidate separately (AIEEE/CET (State conducted test/University tests/CMAT/GPAT)/Association conducted test)-NA
- Calendar for admission against Management/vacant seats:
  - Last date of request for applications
  - Last date of submission of applications Will be updated later on
  - Dates for announcing final results
  - Release of admission list (main list and waiting list shall be announced on the same day)
  - Date for acceptance by the candidate (time given shall in no case be less than 15 days)
  - Last date for closing of admission
  - Starting of the Academic session
  - The waiting list shall be activated only on the expiry of date of main list
  - The policy of refund of the fee, in case of withdrawal, shall be clearly notified

**12. CRITERIA AND WEIGHT AGES FOR ADMISSION**

- Describe each criteria with its respective weightages i.e. Admission Test, marks in qualifying examination etc. – No test conducted, only basis of marks min. marks 35% . The admission process is totally governed & monitored by DTE&T, Odisha, Govt. of Odisha
- Mention the minimum level of acceptance, if any-NA
- Mention the cut-off levels of percentage and percentile score of the candidates in the admission test for the last three years – At least 35 % Marks in last qualifying Exam.
- Display marks scored in Test etc. and in aggregate for all candidates who were admitted– Updated shortly after the admission process is over

**13. LIST OF APPLICANTS**

- List of candidate whose applications have been received along with percentile/percentage score for each of the qualifying examination in separate categories for

open seats. List of candidate who have applied along with percentage and percentile score for Management quota seats–Updated later on

**14. RESULTS OF ADMISSION UNDER MANAGEMENT SEATS/VACANT SEATS -NA**

- Composition of selection team for admission under Management Quota with the brief profile of members (This information be made available in the public domain after the admission process is over)
- Score of the individual candidate admitted arranged in order or merit Updated later on
- List of candidate who have been offered admission
- Waiting list of the candidate in order of merit to be operative from the last date of joining of the first list candidate
- List of the candidate who joined within the date, vacancy position in each category before operation of waiting list

**15. Information of Infrastructure and Other Resources Available**

- Number of Class Rooms and size of each – 15 & 66sqm
- Number of Tutorial rooms and size of each–2 and 50sqm
- Number of Laboratories and size of each– 12 and 110sqm
- Number of Drawing Halls with capacity of each – 2 & 60each
- Number of Computer Centers with capacity of each–4&30each
- Central Examination Facility, Number of rooms and capacity of each – YES, 5 Halls, 100 in each hall
- Barrier Free Built Environment for disabled and elderly persons -YES
- Occupancy Certificate -YES
- Fire and Safety Certificate -YES
- Hostel Facilities – YES separate for Boys &Girls
- Library
  - Number of Library books/ Titles/ Journals available(program-wise) – 12040 /2138/22
  - List of online National/ International Journals subscribed -NO
  - E- Library facilities -Yes
- Laboratory and Workshop
  - List of Major Equipment/Facilities in each Laboratory/Workshop–

Sl No	Branch	Name of the Lab.	Name of the Major Equipment
1	Mechanical Engg	Strength Of Material	Universal Testing Machine Torsion Testing Machine Impact Testing Machine Hardness Testing Machine
	Mechanical Engg	Fluid Mech. & Hydraulic Machine	Pelton Wheel Turbine Centrifugal & Reciprocating Pump Venturi Meter Bernoulli's Equipment
	Mechanical Engg	Automobile Engg Lab	Automobile Chasis, Pneumatic Braking System
	Mechanical Engg	Th. of Machine lab	Governor Balancing Apparatus Epicyclic gear train
	Mechanical Engg	Heat power lab	Window AC Morse Test Refrigerator VARS Tutor Split AC Heat Pump
2		Workshop	Centre Lathe Capston Lathe Grinding M/C, Drilling M/C Shaper & Milling Machine Surface Grinder

3	Electrical Engg	Electrical Machine Lab	DC Compound motor DC Series Motor DC shunt Motor Alternator
		Power Electronics Lab	Different kits of SCR/TRIAC/GTO ,Rectifier, Invertor,Cycloconverter,Battery charger.
		Analog Electronics	DSO,Function/Signal Generator
		Microprocessor lab	8085 & 8086 MP Trainer Kit,8051/8096 Microcontroller Trainer Kit, Traffic Light Controller
		Digital Electronics lab	Combinational Logic Circuits/Counters/FF
		MATLAB & PLC LAB	MATLAB Software, PLC Module Trainer Kit
4	Civil Engg.	Concrete Lab	Universal Testing Machine Los-Angeles Machine Compression Testing Machine Cube Vibrator Machine Impact Testing Machine Crushing Strength Machine
		Geotechnical Lab	Mechanical Sieve Swelling Index Testing Machine Consolidation Test Apparatus CBR Testing Machine Triaxial Apparatus DCPT Permeability Test Apparatus Plate Load Test Apparatus
		Survey lab	Theodolite Auto Level Total Station
		Auto CAD/ STAADPRO	Software installed in Computers for conducting the LAB
5	CSE	Computer Centre 1,2 &3	PC with I5 and I7
6	ETC	C Programming & Web Page Design Lab	Knowledge on C Programming as well as diff. areas of Web design which include Web Graphic design, Interface Design, Authoring Including Standardized code ,Proprietary Software & search engine Optimization
		Circuit Theory & Simulation Lab	Knowledge of Measurement of various Parameters, Verification of Diff. circuits & measuring Instruments and Operation of Electrical & Electronics Test equipments along with application to measurement of circuits parameters
		Digital electronics Lab	Familiarization of digital Trainer Kit .
		Electronic Measurement Instrumentation Lab	Different experiment using Trainer kit . Measurement of Circuit Parameters,Power, Power factor, Phase Angle, Frequency & Time, DC & AC Bridges Characteristics of Discrete amd integrated devices,
		Electrical Machine Lab	Digital instrumentation , Transducer Understanding of different Electrical Machine and identify different parts and connection and test the equipments, Study of different types of Motors
		Networking Lab	To know about different types of networking systems and learn network programming
		Microprocessor & Microcontroller Lab	8085, 8086 Microprocessor,Interfacing, Microcontroller



	Analog Electronics & Linear Lab	Characteristics of Diodes, Transistors , JFET, Different amplifier circuits, Different Oscillators Circuits, Different Multivibrator, Clipper & Clamper circuits, Power supply circuits using Ics OPAMP & its Applications, PCB Design	
	Analog & Digital communication Lab	Observe Various communication equipments,	
	VLSI & Embedded System Lab	Study of Combinational circuits design, Programmable Logic devices, Verilog Modelling of combinational Circuits, , Sequential circuits	
	Wave Propagation & Communication Engg. Lab	Study of Microwave components tube semiconductor devices, transmission line trainer kit, antenna trainer kit, Details about color TV & CCTV	
	Computer Hardware Lab	Knowledge on physical parts or components of a computer such as the monitor, mouse, keyboard, computer data storage, HDD, system unit and installation of software and antivirus	
	MATLAB & Processing Simulation Lab	Consolidate theoretical DSP Concepts by Revisiting topics of quantization and filter phase. It is a software package for high performance language for technical computing which integrates computation, visualization and programming in an easy- to- use environment in familiar mathematical notation	

• List of Experimental Setup in each Laboratory/ Workshop–

Sl No	Branch	Name of the Lab.	Name of the lab set up
1	Mechanical Engg	Strength Of Material	Determine the salient points (Young's Modulus) from stress/strain curve Determining torsional rigidity of a shaft Determining toughness of material Determination of hardness of the materials.
		Fluid Mech. & Hydraulic Machine	Performance test Determination of C.D. Verification of Bernoulli's Theorem
		Automobile Engine Lab	Study of Automobile Chasis, Study of Pneumatic Braking System.
		Th. of Machine lab	Determination of Centrifugal force of a Governor Thickness of M.S. Flat Demonstration of static balancing apparatus
		Heat power lab	Determination COP of refrigerator Determination of brake thermal efficiency of single cylinder Diesel engine Determination of B.H.P,I.H.P,BSFC of Multi Cylinder engine by Morse Test Demonstration of Pressure measuring instruments.
	Workshop	Workshop	Turning ,Facing, Drilling, Taper Turning
2	Electrical Engg	Electrical Machine Lab	To study speed control of DC Motor Study of types of Starter with motor Parallel operation of Alternator
		Power Electronics Lab	To study V-I characteristics of SCR/DIAC/IGBT/TRIAC etc Study of Cyclo converter
		Analog Electronics	Study rectifiers with filters, CE/CB/CC
		Microprocessor lab	To run the programme of addition/subtraction by 8085 MP
		Digital Electronics lab	Study of logic gates/Universal gate/FF/Counter etc
		MATLAB & PLC LAB	Study /Design circuits through programmes Arithmetic operation, Programme for Conveyor belt, traffic light, temp. control, motion control
		Circuit Network theory	Study of different theorems, Filter circuits
	Civil Engineering	Concrete Lab	to test the tensile stress and compressive strength of materials
			to measure the degradation of mineral aggregate of standard grading resulting from a combination of actions including abrasion or attrition, impact and grinding in a rotating steel drum containing a specified number of steel spheres
			to determine how a product or material reacts when it is compressed, squashed, crushed or flattened by measuring fundamental parameters that determine the specimen behavior under a compressive load
			To evaluate an object's capacity to withstand high-rate loading
		Geotechnical LAB	to assess the particle size distribution For measuring expansion, potential of soils
		Surveying LAB	for measuring angles both horizontally and vertically modern surveying and building construction
		Auto CAD/ STAADPRO	For 2D & 3D Structural Analysis

E&TC	C Programming & Web Page Design Lab	Different Trainer Kit	
	Circuit Theory & Simulation Lab	Digital Trainer Kit	
	Digital electronics Lab	CRO ,LVDT,Different Bridge,PMMC ,Proximity Sensor	
	Electronic Measurement Instrumentation Lab	Different types of Motor and Alternator	
	Electrical Machine Lab		
	Networking Lab	Microprocessor and Microcontroller Kit	
	Microprocessor & Microcontroller Lab	Different Analog and Linear Ics Trainer Kit .	
	Analog Electronics & Linear ICs Lab	Different Analog and Digital Communication Trainer Kit .	
	Analog & Digital communication Lab	FPGA KIT DTH ,LED TV	
	VLSI & Embedded System Lab		
	Wave Propagation & Communication Engg. Lab		
	Computer Hardware Lab	MATLAB Software	
	MATLAB & Processing Simulation Lab		

### COMPUTING FACILITIES

- Internet Bandwidth – 100MBPS,10MBPS
  - Number and configuration of System – 130 & Intel i5 and i7 Processor with 4/8GBRAM
  - Total number of system connected by LAN –130
  - Total number of system connected by WAN -NA
  - Major software packages available–C,C++,Oracle,Visula Studio ,MATLAB &,AUTOCAD
  - Special purpose facilities available – Online exam, E-evaluation, Video conferencing
- Innovation Cell -YES
  - Social Media Cell -YES
  - Compliance of the National Academic Depository(NAD),applicable to PGCM/PGDM Institutions and University Departments
- List of facilities available
    - Games and Sports Facilities -YES
    - Extra-Curricular Activities -YES
    - Soft Skill Development Facilities -YES
- Teaching Learning Process
    - Curricula and syllabus for each of the programmes as approved by the University
    - Academic Calendar of the University
    - Academic Time Table with the name of the Faculty members handling the Course
    - Teaching Load of each Faculty
    - Internal Continuous Evaluation System and place
    - Student’s assessment of Faculty, System in place

- For each Post Graduate Courses give the following:
  - Title of the Course
  - Curricular and Syllabus NA
  - Laboratory facilities exclusive to the Post Graduate Course
  - Special Purpose
    - Software, all design tools incase } NA
    - Academic Calendar and framework

**16.** Enrollment of students in the last 3 years – 704

**17.** List of Research Projects/ Consultancy Works

- Number of Projects carried out, funding agency, Grant received-NIL
- Publications (if any) out of research in last three years out of masters projects -NIL
- Industry Linkage -YES
- MoUs with Industries (minimum 5) -5

**18.** LoA and subsequent EoA till the current Academic Year– yes

**19.** Accounted audited statement for the last three years –

**20.** Best Practices adopted, if any-

Note: Suppression and/or misrepresentation of information shall invite appropriate